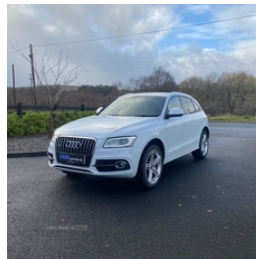


Audi Q5 2.0 TDI [150] Quattro S Line Plus 5dr
| Jul 2013
LOW MILES

£13,450



Miles:	64000
Fuel Type:	Diesel
Transmission:	Manual
Colour:	White
Engine Size:	1968
CO2 Emission:	154
Tax Band:	G (£240 p/a)
Body Style:	Sport utility vehicle
Insurance group:	22E
Reg:	PF13VOG

Technical Specs

DIMENSIONS	
Length:	4629mm
Width:	1898mm
Height:	Not Availablemm
Seats:	5
Luggage Capacity (Seats Up):	540L
Gross Weight:	2365KG
Max. Loading Weight:	610KG

PERFORMANCE & ECONOMY	
Fuel Consum. (Urban Cold):	41.5MPG
Fuel Consum. (Extra Urban):	52.3MPG
Fuel Consum. (Combined):	47.9MPG
Fuel Tank Capacity:	75L
Number Of Gears:	6 SPEED
Top Speed:	118MPH
Acceleration 0-100 km/h:	10.8s
Engine Power BHP:	147.5BHP

2013 Audi Q5 S-Line+ Quattro

This Q5 comes in Glacier White, has only covered 64000miles, Manual gearbox, and is in outstanding condition.

High spec 4x4 with all the usual Audi Q5 refinements including:

- Heated Leather sports seats
- Parking sensors
- Rear privacy glass
- Power rear door
- 20" Alloy wheels
- DAB radio
- 2x Keys

£13450

Finance available. get in touch for best quote

07920004462

Vehicle Features

3 point seatbelts on all seats, 3 rear headrests, 3 zone climate control, ABS, Acoustic windscreen, Aluminium sill plates, Aluminium window surround, Audi music interface, Auto dimming rear view mirror, Auxiliary input socket, Body colour bumpers, Chrome exhaust tailpipe, Chrome fog light surround,

Collapsible spare wheel, Concert radio/single CD player with MP3 facility, DAB Digital radio, Diesel particulate filter, Driver and passenger airbags, Driver and passenger side airbags, Driver information centre with colour display in instrument panel, Electric pack A - Transporter, Electromechanical parking brake, ESP, First aid kit, Front and rear electric windows, Front centre armrest with 12v socket, Front fog lights, Front passenger airbag deactivation, Front sports seats including electric lumbar support, Headlight washers, Height adjustable driver's seat, High gloss black grille, Hill descent control, Isofix front passenger and rear seat preparation, Light and rain sensor for auto activation of lights and windscreen wipers, Locking wheel bolts, MMI - Multi Media Interface control system, Platinum grey rear diffuser, Privacy glass, Reach + rake adjustable steering column, Rear acoustic parking system, Rear spoiler, Rear wiper, Remote central locking, Remote electric boot opening/closing, Service interval indicator, Servotronic speed related PAS, S Line body styling, Split fold rear seat, Thatcham category 1 alarm + immobiliser, Towbar preparation, Traction control, Warning triangle, Xenon headlights with LED running lights