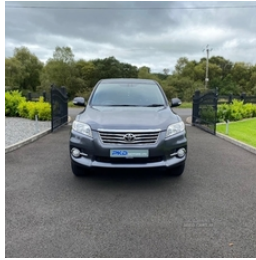


## Toyota RAV4 2.2 D-4D XT-R 5dr | Nov 2010 SOLD



2010 Toyota RAV4 2.2 D-4D 4x4

In Decuma Grey with only 86750 miles from 2 owners.

Great spec jeep with:

- Privacy glass
- Parking sensors
- Heated seats
- Half leather interior
- 17" alloy wheels
- Multi function steering wheel
- Toyota service history

Finance available

07920004462

### Vehicle Features

2 speed/intermittent/electric front wipers, 3 point rear seatbelts x3, 6 speakers, 17" 6 spoke alloy wheels, 60/40 split fold rear seat back, ABS/EBD, Active headrests, Adjustable headrests, Alcantara/leather upholstery, Ashtray and cigar lighter, Automatic rain sensing wipers, Auxiliary power socket in centre armrest, Auxiliary power socket in luggage area, Auxiliary socket for external MP3 player, Bluetooth system, Body colour door mirrors and handles, Body coloured bumpers, Bottle holders, Brake assist function, Brushed metallic effect fascia, Central double locking with remote activation, Centre armrest with storage box, Child proof door locks, Chrome effect grille, Courtesy light delay, Cruise control, Diesel particulate filter, Digital clock, Door ajar warning, Driver's footrest, Driver/Front

<b>Miles:</b>	86750
<b>Fuel Type:</b>	Diesel
<b>Transmission:</b>	Manual
<b>Colour:</b>	Grey
<b>Engine Size:</b>	2231
<b>Tax Band:</b>	G (£220 p/a)
<b>Body Style:</b>	Sport utility vehicle
<b>Insurance group:</b>	26E
<b>Reg:</b>	YT60ZGM

### Technical Specs

DIMENSIONS	
<b>Length:</b>	4335mm
<b>Width:</b>	1815mm
<b>Height:</b>	1685mm
<b>Seats:</b>	5
<b>Luggage Capacity (Seats Up):</b>	410L
<b>Gross Weight:</b>	2190KG
<b>Max. Loading Weight:</b>	595KG
<b>Max. Loading Weight:</b>	595KG
PERFORMANCE & ECONOMY	
<b>Fuel Consum. (Urban Cold):</b>	37.7MPG
<b>Fuel Consum. (Extra Urban):</b>	54.3MPG
<b>Fuel Consum. (Combined):</b>	47.1MPG
<b>Fuel Tank Capacity:</b>	60L
<b>Number Of Gears:</b>	6 SPEED
<b>Top Speed:</b>	118MPH
<b>Acceleration 0-100 km/h:</b>	10.2s
<b>Engine Power BHP:</b>	147.5BHP
<b>Engine Power BHP:</b>	147.5BHP

Passenger airbags, Driver/front passenger side airbags, Drivers knee airbag, Dual zone climate control, Dusk sensor, Electrically adjustable and heated door mirrors, Electric front/rear windows, Electric front seats, Electric power steering, Electrochrome rear view mirror, Electronic air re-circulation, Electronic headlamp levelling, Engine immobiliser, Front and rear cupholders x 2, Front and rear curtain airbags, Front fog lights, Front seat backrest storage nets, Front seatbelts with electronic sensing + pretensioner + force limiter, Fully trimmed boot, Heated front seats, Hill assist control, Illuminated Driver/Pass vanity mirrors with cover, Illuminated entry system, Isofix child seat preparation, Leather door inserts, Leather sports steering wheel, Leather wrapped gear shift knob, Lights on warning, Lockable cooled glovebox, Locking wheel bolts, Luggage area lamp, Luggage load hooks, Outside temperature display, Passenger airbag cut-off device, Pollen filter and air recycling, Privacy glass (rear side windows and rear screen), Projector headlamps, Radio/6 CD changer + MP3 Facility, Reach + rake adjustable steering column, Rear centre armrest, Rear screen wiper - intermittent, Remote alarm with perimeter/microwave protection, Retractable door mirrors, Roof mounted aerial, Sliding/reclining rear seats, Steering column lock, Steering wheel mounted audio controls, Sun visors, Tonneau cover, Traction control, Transponder key, Trip computer, Tyre repair kit, Under floor storage trunk, Upper glovebox, Vehicle Stability Control (VSC)